



The Pallet



The Color Green

Can Going Green Rake in the Green?



Blue, Yellow, and Red make up the three primary colors. When you mix blue and yellow you arrive at **green** — a secondary color. This color now identifies concern for the environment. Besides the clear environmental positives, does green consciousness carry secondary financial benefits? Yes.

First, you attract clients who care about the environment and want to buy from others of like mind. Then, these clients will tell others about you. Ultimately, you help the environment and your bottom line. Thus, green consciousness contributes to financial success. Basically, green attracts green!

I'll take a **Combo** and some **Boiler Fuel** to go!

An economically challenged single student mentioned taking his dates

Gas World	
Regular 1.87	$\frac{9}{10}$
Super 2.15	$\frac{9}{10}$
Burger Combo \$2.99	

to places where the gas and food prices appeared on the same menu.

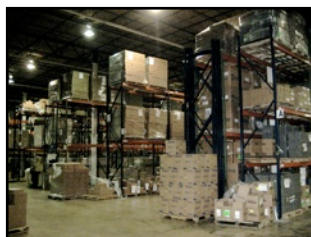
Pallet Consultants has a better combo and fuel deal available. Our Atlanta facility turns otherwise unusable wood into boiler fuel. Pallet parts that would otherwise wind up in landfills end up providing usable energy. (We do mulch too.)

Then, all of our facilities can design specialty/custom *combo* pallets that save you 20% over the cost of a new one. Pallets built of new *and* recycled wood save money, help the environment, and work just as well.

This helps us use our forest products to the utmost *and* provide service and savings for you.

PALLET CONSULTANTS OFFERS YOUR BUSINESS A FREE — NO OBLIGATION ASSESSMENT

Pallet Consultants offers a free — no cost, no obligation — assessment of your warehouse or distribution center. Our *Warehouse Renewal* team will do a walk-through of your facility and make sure you have the appropriate pallets, warehouse equipment, and packaging supplies at the right cost. Then, we offer our professional recommendations. On



average, **Pallet Consultants** saves businesses about \$10,000 a year on pallet services alone. Our Pallet Buy Back program, for example, *will pay you* for excess pallets and wood materials. The benefits increase when you factor in 10% to 30% additional savings from higher warehouse efficiency. You may schedule your free visit by calling 1 (888) 782-2909 or (954) 946-2212.