

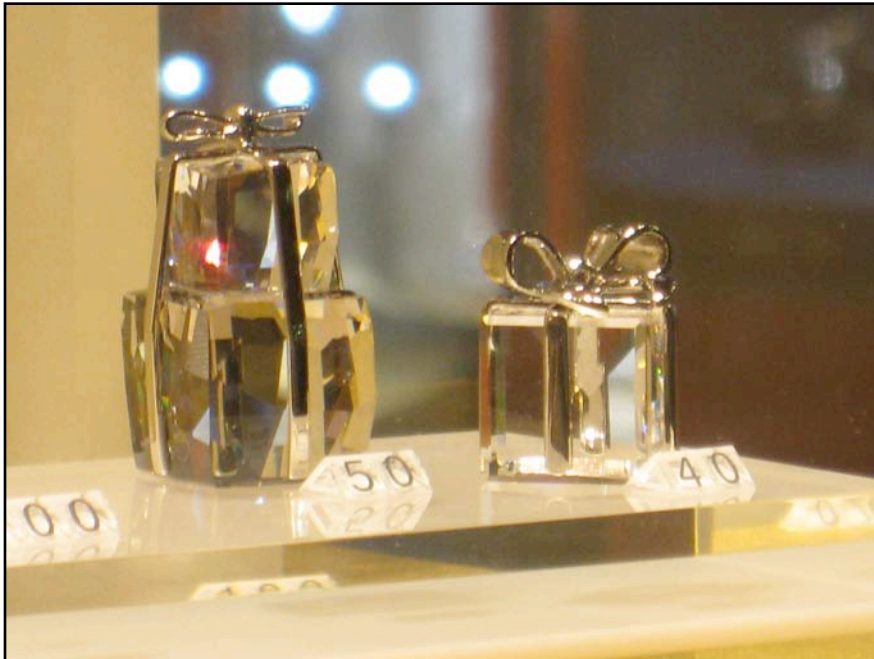


# The Pallet



## What to Give, When

*Why let a time of giving turn into a stressful headache?*



Gift giving can turn into a bow wrapped headache during the holidays. A celebratory season of joy, generosity, and remembrance can turn into a fight for the last *Captain Pallet* action figure or an occasion to get back at Aunt Lulu for giving you a faded dollar store figurine

as a gift last year. (You had spent somewhat more on three ounces of her favorite scent — Eau d'Moose.) So, what to do?

Give without going into debt. Give to bring happiness to the recipient —irrespective of their giving to you. Give now. Above all, give from the heart.

### Our Gift to You

What can a pallet company give as a gift? Well yes, pallets. But if we gave them away sooner or later we would not have a business!

Instead, Pallet Consultants offers the gift of caring that *your* business prospers — by offering you our knowledge and experience. More than one customer can testify to how Pallet Consultants has come through for them beyond customary expectations for a business. Like the time a company needed our trucking services in order to fulfill orders during an unforeseen crisis. Or when ... well, you get the picture. Yes. We do run a business. But, we take care to help *you* continue to run yours in a profitable way.



### START PLANNING FOR A MORE EFFICIENT AND COST SAVING NEW YEAR WITH OUR HELP

We can start planning our New Year's resolutions before January 1. Higher warehouse efficiency and reduced costs count as worthy resolutions. Pallet Consultants offers a free — no obligation — assessment of your warehouse or distribution center. The *Warehouse Renewal* team will



do a walk-through of your facility to assure that you have the right pallets, warehouse equipment, and packaging supplies. We save businesses an average of \$10,000 a year on pallets alone. An extra 10% to 30% saved on warehouse efficiency sweetens the prospect. Call Pallet Consultants at (954) 946-2212 to schedule a visit.